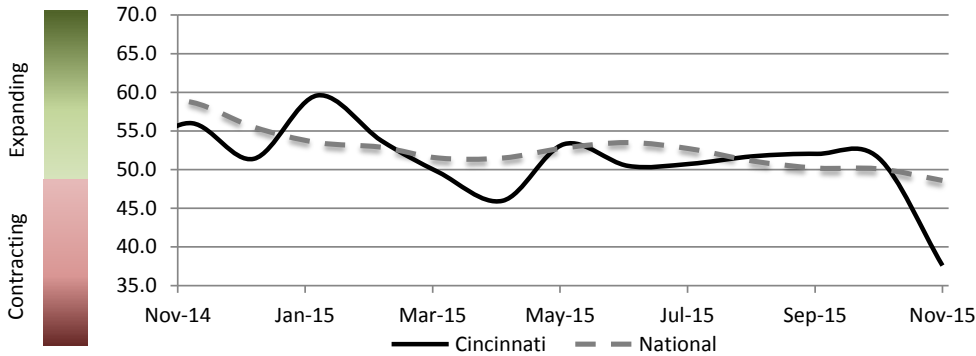


Report on Business, November 2015

Cincinnati



PMI At A Glance		
Period	Cincinnati	National
Nov-15	37.6	48.6
Oct-15	51.5	50.1
Sep-15	52.0	51.1
Aug-15	51.7	52.7
Jul-15	50.7	53.5
Jun-15	50.5	52.8
Nov-14	56.0	58.7

National and Cincinnati regions both report contractions in PMI for November, the second month in a row. However, Cincinnati's contraction is greater than any variation within the past six months and may reflect limited foreign investment as a result of a strong dollar. National and Cincinnati Core PMI Components are either stagnant or down across the board. Lastly, the national manufacturing sector reported its first decline in 36 months.

	Jun	Jul	Aug	Sep	Oct	Nov	
New Orders (Core PMI Component) (Seasonally Adjusted)							
Cincinnati	65.5	53.8	56.8	57.3	72.0	25.2	Expanding
National	56.0	56.5	51.7	50.1	52.9	48.9	Contracting
Production (Core PMI Component) (Seasonally Adjusted)							
Cincinnati	50.6	52.4	62.4	74.1	64.8	33.8	Contracting
National	54.0	56.0	53.6	51.8	52.9	49.2	Contracting
Employment (Core PMI Component) (Seasonally Adjusted)							
Cincinnati	63.4	49.3	50.4	50.9	44.8	51.2	Contracting
National	55.5	52.7	51.2	50.5	47.6	51.3	Contracting
Supplier Deliveries (Core PMI Component) (Seasonally Adjusted)							
Cincinnati	41.1	73.3	50.2	44.5	38.6	52.7	Contracting
National	48.8	48.9	50.7	50.2	50.4	50.6	Contracting
Inventory (Core PMI Component)							
Cincinnati	31.9	25.0	38.9	33.3	37.5	25.0	Contracting
National	53.0	49.5	48.5	48.5	46.5	43.0	Contracting

	Jun	Jul	Aug	Sep	Oct	Nov	
Perceived Customer Inventory Levels							
Cincinnati	36.4	25.0	50.0	44.4	43.8	41.7	Contracting
National	48.5	44.0	53.0	54.5	51.0	50.5	Contracting
Backlog							
Cincinnati	61.1	50.0	57.1	64.3	75.0	25.0	Contracting
National	47.0	42.5	46.5	51.5	42.5	43.0	Contracting
New Exports							
Cincinnati	57.1	0.0	50.0	80.0	66.7	50.0	Contracting
National	49.5	48.0	46.5	46.6	47.5	47.5	Contracting
Imports							
Cincinnati	56.3	100.0	64.3	57.1	58.3	33.3	Contracting
National	53.5	52.0	51.5	50.5	47.0	49.0	Contracting
Commodity Prices							
Cincinnati	59.2	25.0	33.4	33.3	43.8	33.3	Contracting
National	49.5	44.0	39.0	38.0	39.0	35.5	Contracting

Financial Sponsorship Provided By:



In Affiliation With:



CONTACT INFORMATION

Christopher Nicak
Senior Research Associate
Christopher.Nicak@uc.edu
513-556-9053